

JVC

SCHEMATIC DIAGRAMS

INFRARED ADDRESS TRANSMITTER

XA-GT1TN

CD-ROM No.SML200110

Area Suffix

E --- Continental Europe

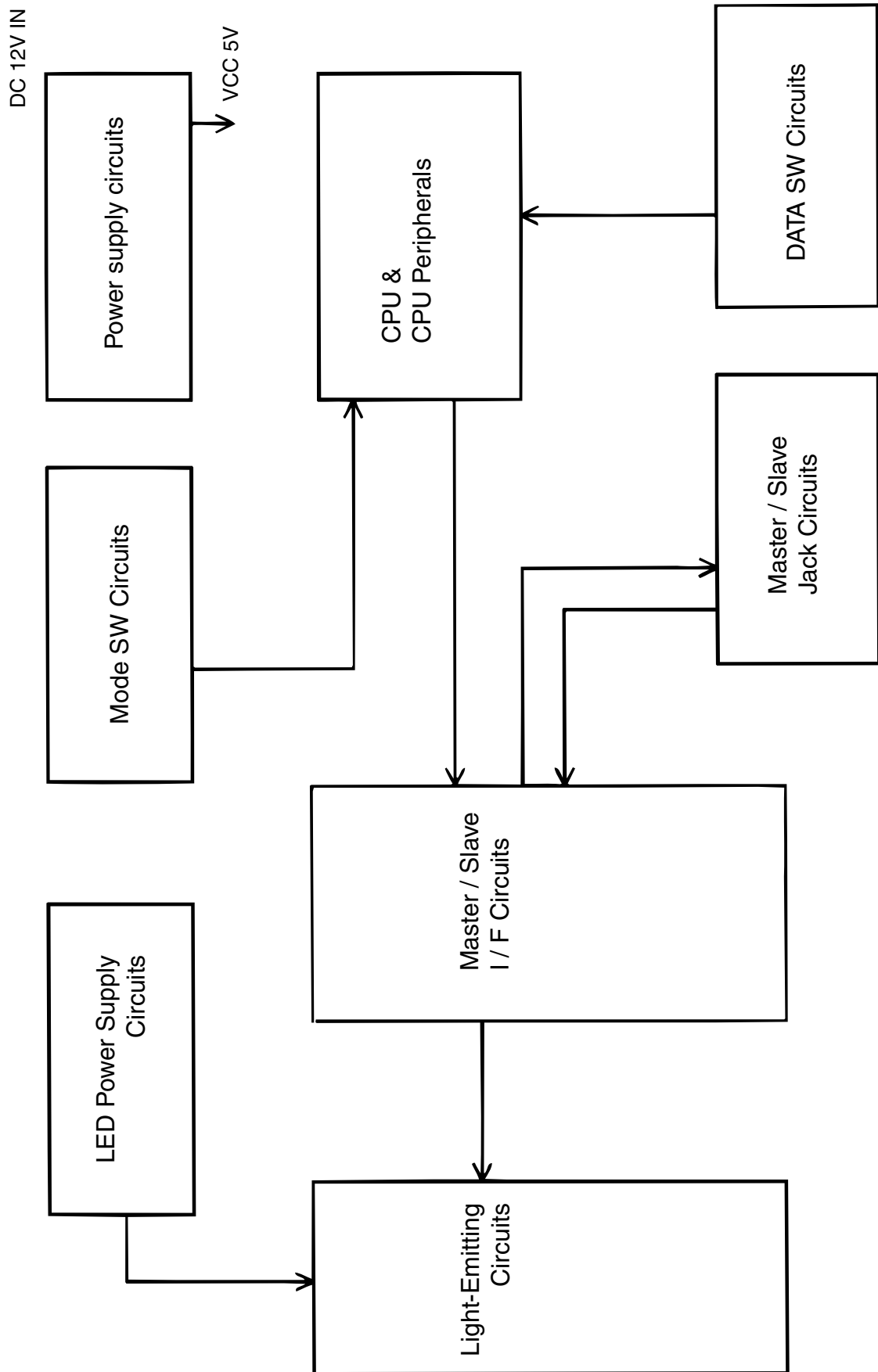


Contents

Safety Precaution	2-2
Block diagram	2-3
Setandard schematic diagrams	2-5
Printed circuit boards	2-6

In regard with component parts appearing on the silk-screen printed side (parts side) of the PWB diagrams, the parts that are printed over with black such as the resistor (■), diode (▣) and ICP (●) or identified by the "△" mark nearby are critical for safety. When replacing them, be sure to use the parts of the same type and rating as specified by the manufacturer. (Except the JC version)

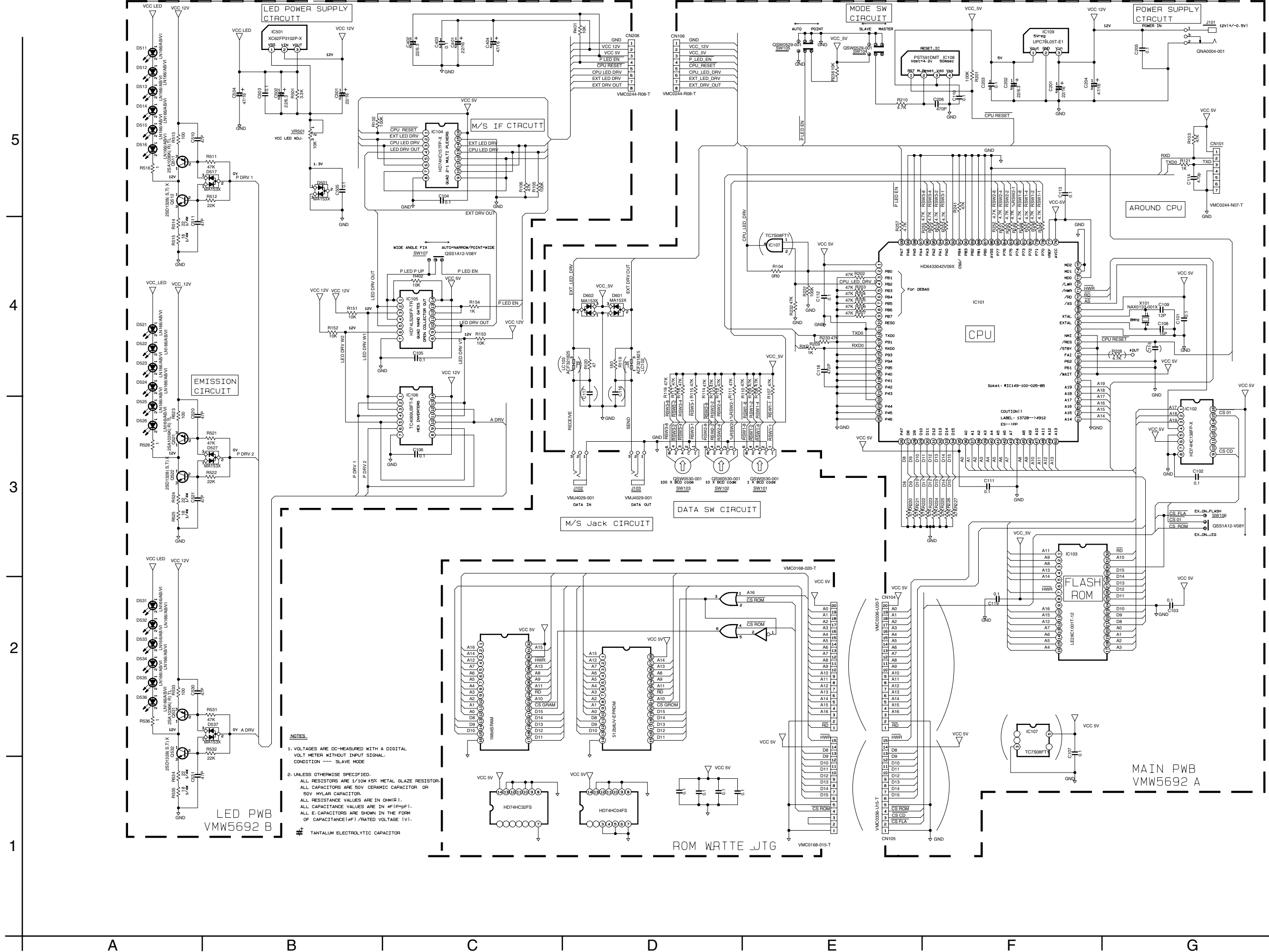
XA-GT1 Block diagram



< M E M O >

Standard schematic diagrams

Transmission circuit diagram



NOTES

1. VOLTAGES ARE DC-MEASURED WITH A DIGITAL VOLT METER WITHOUT INPUT SIGNAL. CONDITION --- SLAVE MODE
2. UNLESS OTHERWISE SPECIFIED, ALL RESISTORS ARE 1/10W ±5% METAL GLAZE RESISTOR. ALL CAPACITORS ARE 50V CERAMIC CAPACITOR OR 50V MYLAR CAPACITOR. ALL RESISTANCE VALUES ARE IN OHM(Ω). ALL CAPACITANCE VALUES ARE IN #F(PpF). ALL E. CAPACITORS ARE SHOWN IN THE FORM OF CAPACITANCE(#F)/RATED VOLTAGE (V).

TANTALUM ELECTROLYTIC CAPACITOR

LED PWB
VMW5692 B

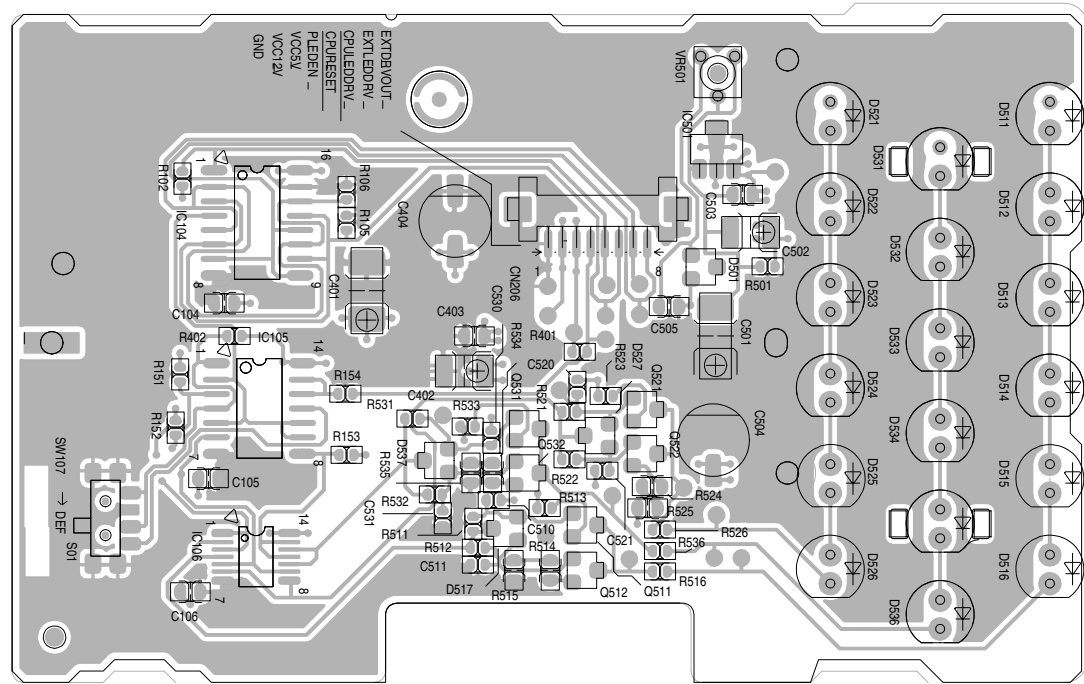
MAIN PWB
VMW5692 A

5
4
3
2
1

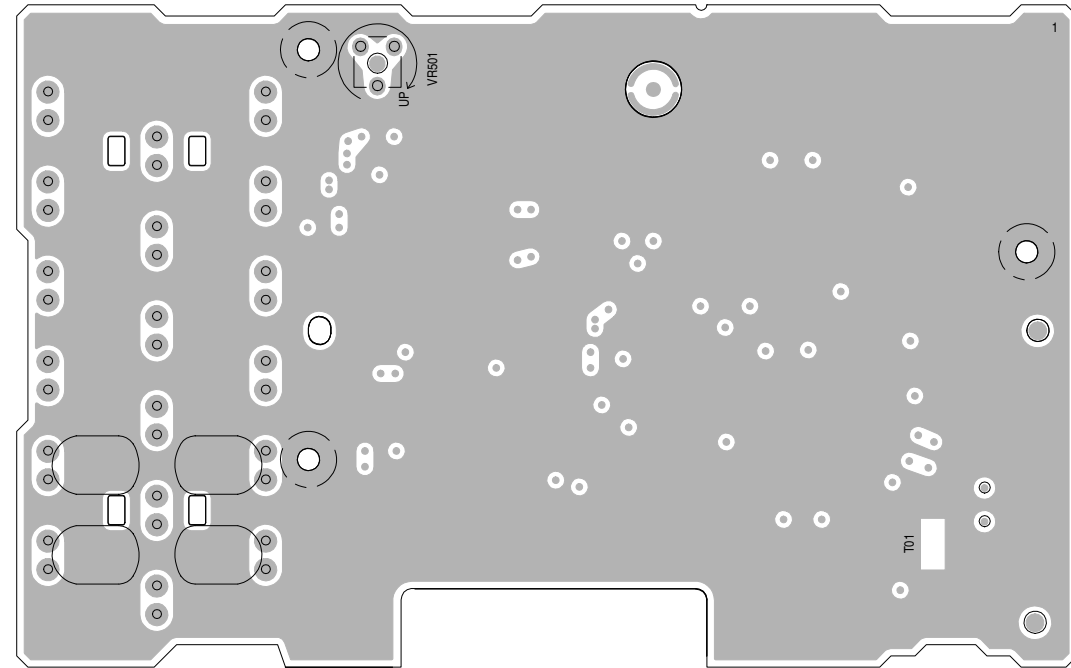
A B C D E F G

Printed circuit boards

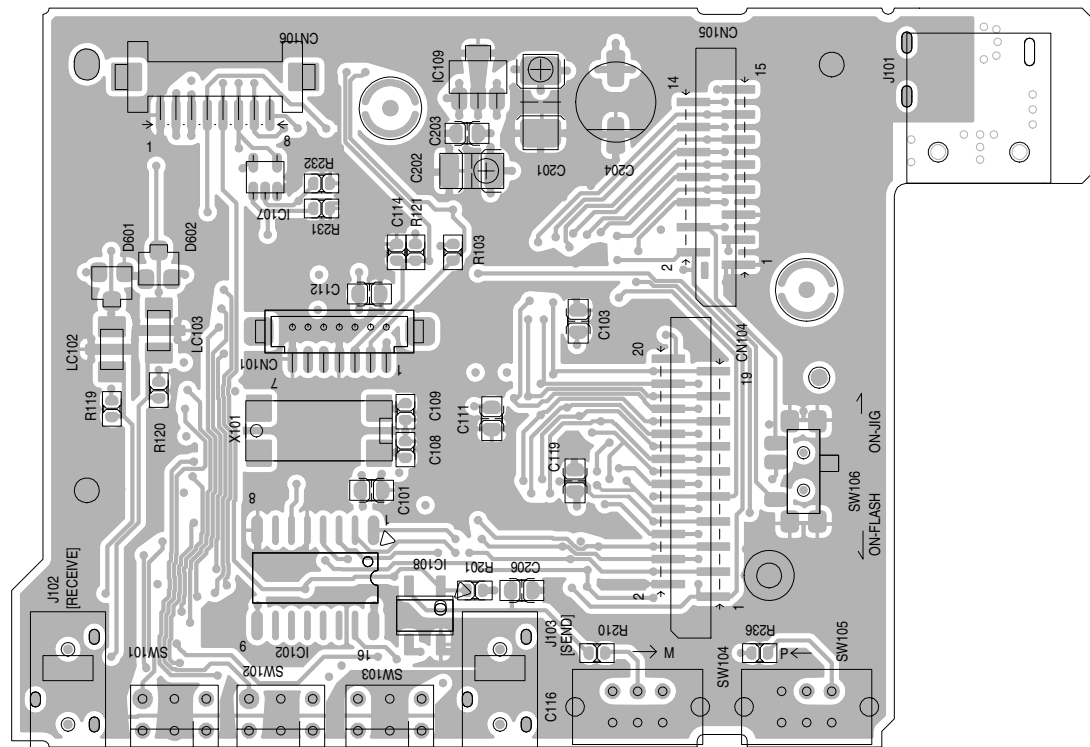
LED Board surface side



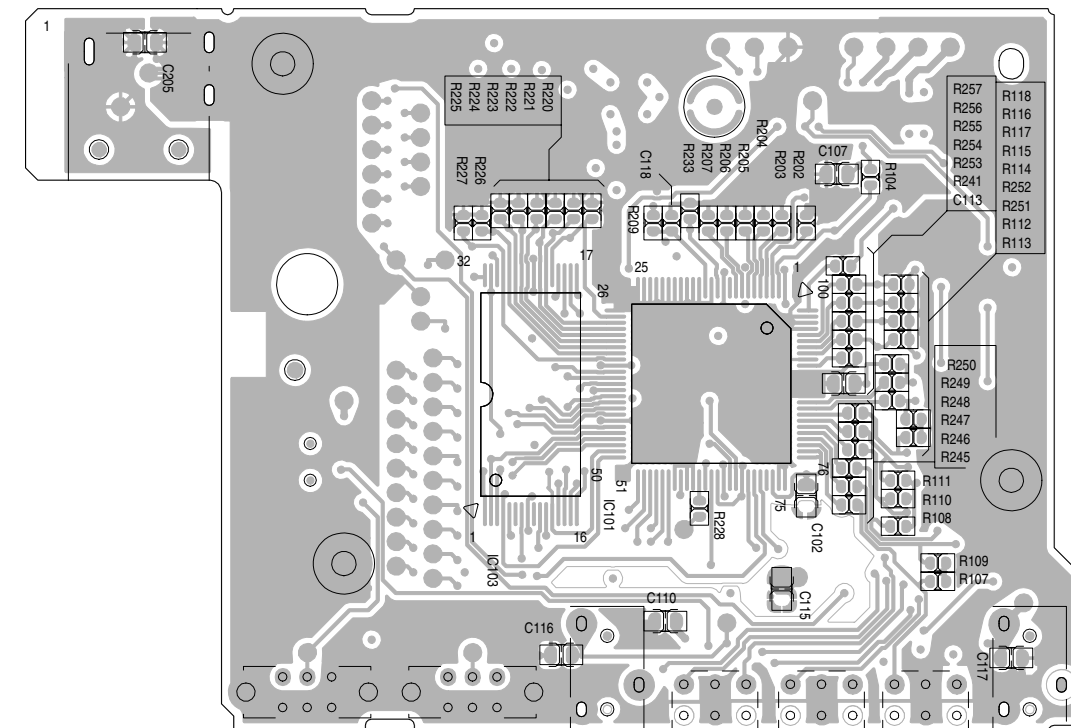
LED Board bottom side



Main board surface side



Main board bottom side



5

4

3

2

1

A

B

C

2-6 D

E

F

G

H

< M E M O >

XA-GT1TN

JVC

VICTOR COMPANY OF JAPAN, LIMITED

AUDIO & COMMUNICATION BUSINESS DIVISION

PERSONAL & MOBILE NETWORK BUSINESS UNIT. 10-1,1chome,Ohwatari-machi,Maebashi-city,371-8543,Japan